

**INTEGRATE ALL KIND OF EQUIPMENT, NO MATTER WHAT BRAND**

Cover your entire operations – from raw material reception to finished packaged and palletized products, with any brand of equipment, and at all of your sites.

# ONE TETRA PAK® PLANTMASTER

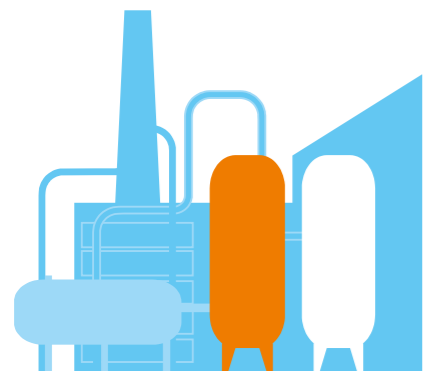
## FOR TOTAL CONTROL AND TOP PERFORMANCE

Take total control of your operations to achieve your top performance with Tetra Pak® PlantMaster – the world’s most advanced plant automation and information solution specifically designed for food production and based on extensive food production knowledge.



**CUSTOMIZE FREELY AND BE READY FOR THE FUTURE**

- Get a modular and scalable integrated solution
- Customize it with the right modules relevant for you today
- Quickly and easily create new functions for your future needs



**REDUCE TIME LOSSES, DOWNTIME AND WASTE TO CUT OPERATIONAL COSTS**

You get real-time information on your entire operation, supporting operators to make the right decisions at the right time and eliminating the risk of human error.



**FULL END-TO-END TRACEABILITY**

Cover the origin of materials, ingredients and processing and packaging routing for complete logging and tracking of all production parameters – for easy compliance with food safety regulations and full transparency throughout the supply chain.



**SECURE CONSISTENT PRODUCT QUALITY AND FULL CONTROL OF FOOD SAFETY**

- Simplify your quality management with one system for your entire operation
- Replace manual quality reporting with a digitalized system
- Get complete automated control of workflows, operations, process parameters and critical control points in real time



**ONE OPEN MES SOFTWARE SOLUTION INTEGRATES WITH THE CLOUD AND ERP SYSTEMS**

Seamlessly integrate any equipment or data source into other systems and turn data into insights in reports and dashboards to continuously drive and optimize performance.