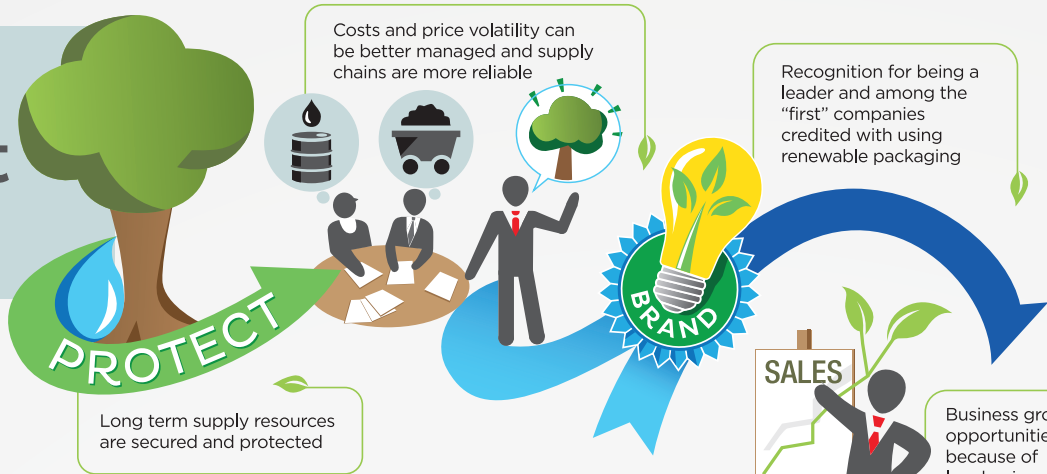


Your World When You Move to the Front With Your Packaging



Pending resource scarcity is alleviated

Making packaging products from renewable resources that can be re-grown or replenished, can help offset the environmental and economic strain on our natural resources. **It's good for the planet and good for the bottom line.**



Long term supply resources are secured and protected

What happens if you stand still?
 Join the campaign. Find out more:
www.tetrapakusa.com/sustainability/movingtothefront



Biodiversity can be supported and sustainable forests serve as a carbon sink



More certainty that supply is always higher than demand because renewable resources are tied to responsible land and forest management



Leadership to preserve natural resources will strengthen brand equity and the emotional connection with consumers who will feel good about a brand that embodies renewability

MOVING TO THE FRONT

